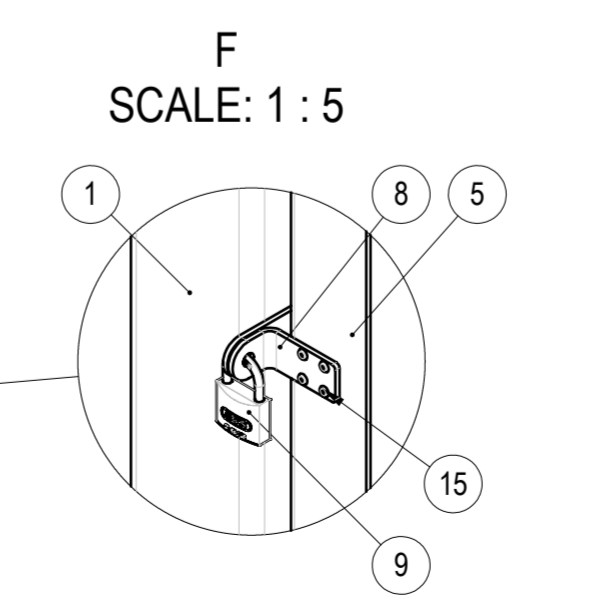
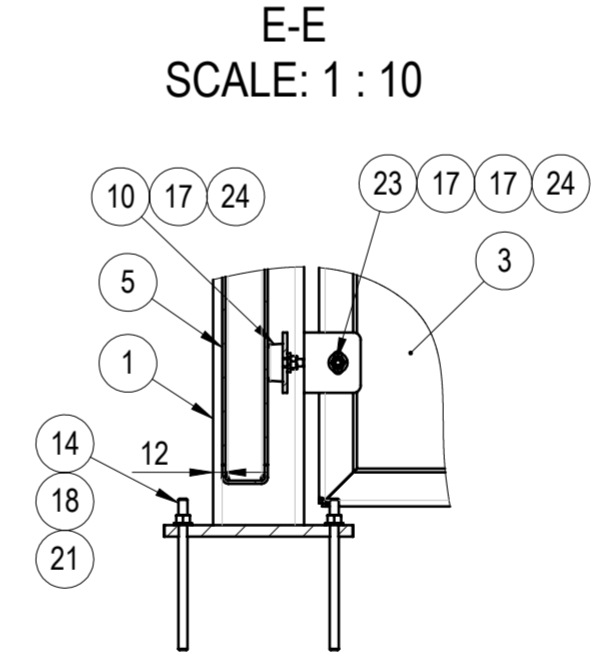
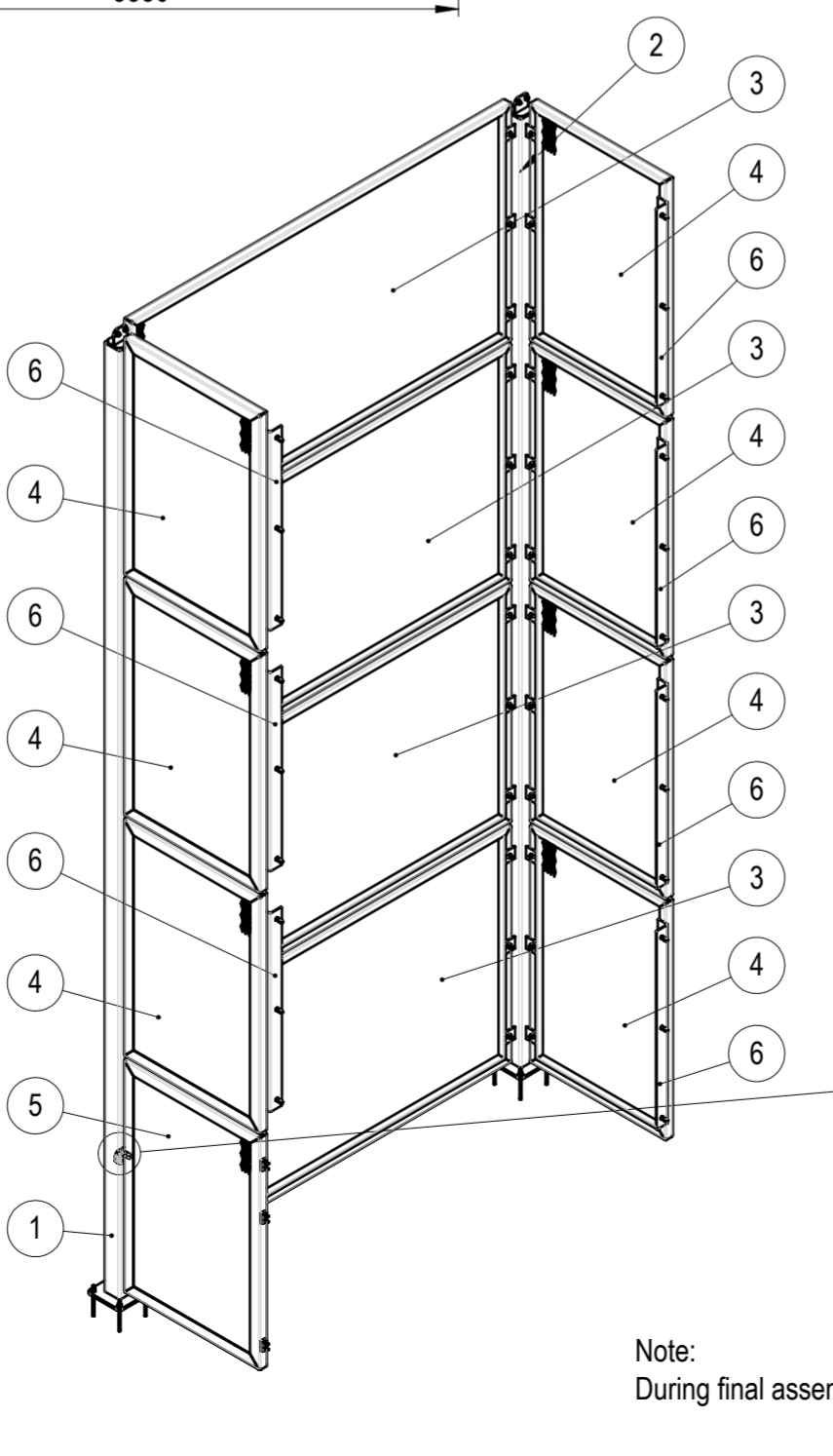
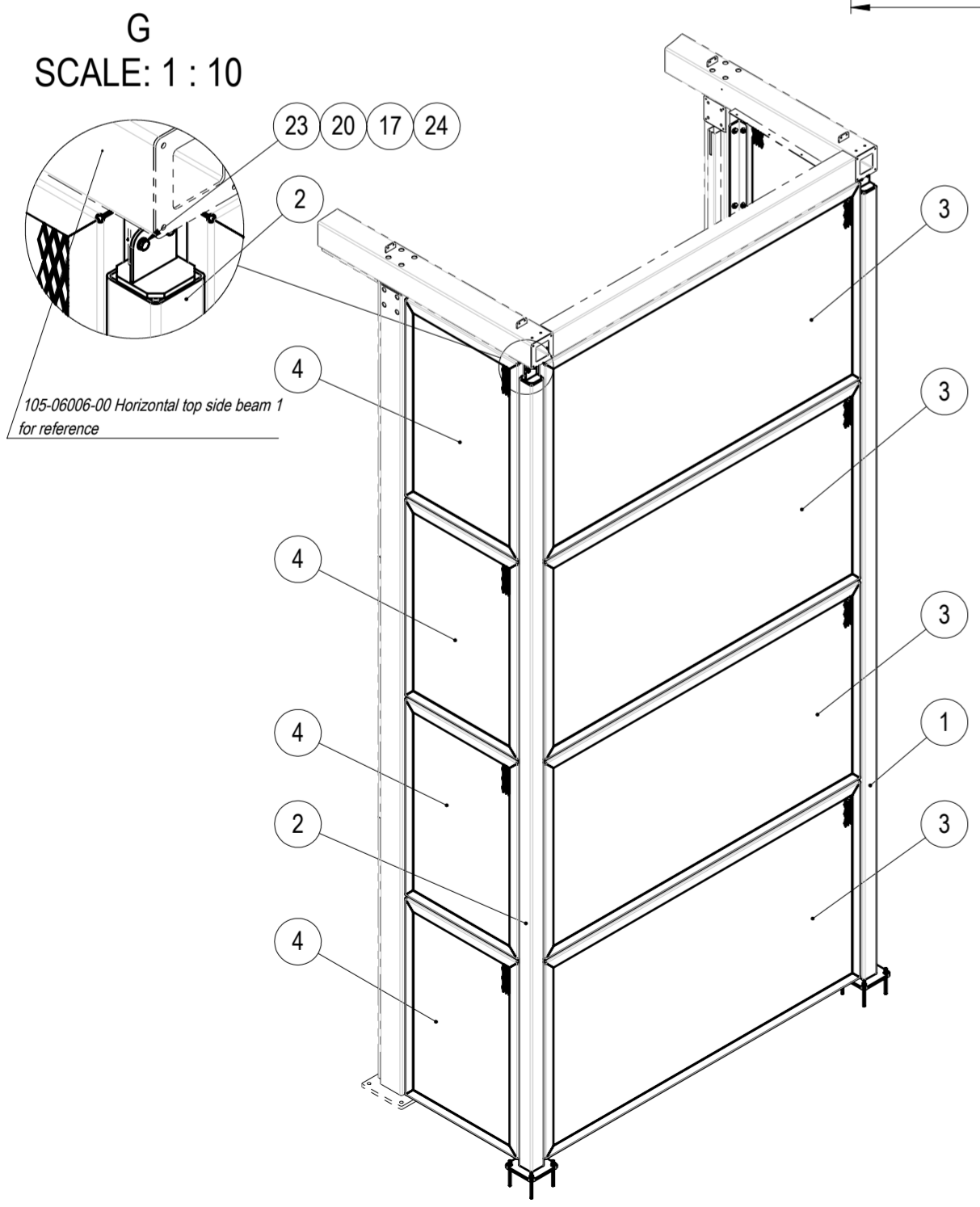


Note:  
Before installing the L-brackets and hinges to the 105-06000-00 right turning channel structures, drill Ø19 mm holes and M8 threads in the R3 and R4 columns.  
After drilling, protect the holes and threads with conservation grease.



Note:  
During final assembly, apply Loctite 243 to the threads of all metric fasteners.

| NO. | PART NO                               | DESCRIPTION                                | MATERIAL    | PROCESSING  | REVISION | WEIGHT | QTY |
|-----|---------------------------------------|--------------------------------------------|-------------|-------------|----------|--------|-----|
| 1   | 105-60301-00                          | Rear column 1                              | -           | WLD HDG     |          | 144.72 | 1   |
| 2   | 105-60302-00                          | Rear column 2                              | -           | WLD HDG     |          | 144.60 | 1   |
| 3   | 105-60303-00                          | Rear panel                                 | -           | WLD HDG PNT |          | 90.78  | 4   |
| 4   | 105-60304-00                          | Side panel 1                               | -           | WLD HDG PNT |          | 42.26  | 7   |
| 5   | 105-60305-00                          | Side panel 2                               | -           | WLD HDG PNT |          | 41.97  | 1   |
| 6   | 105-60300-01                          | L-bracket                                  | S355J2      | LCB HDG     |          | 6.47   | 7   |
| 7   | 105-60300-02                          | 3mm distancer                              | DX51D+Z275  | LC          |          | 0.03   | 3   |
| 8   | 105-60300-03                          | Bent padlock plate                         | DX51D+Z275  | LCB         |          | 0.08   | 1   |
| 9   | Abus 65/40                            | Brass Padlock                              | -           | COTS        |          | 0.15   | 1   |
| 10  | Elesa+Ganter DVB.6-50-20-M10-28-40    | Rubber buffer                              | -           | COTS        |          | 0.04   | 3   |
| 11  | Elesa+Ganter GN 237-ZD-60-60-A-SW     | Hinges                                     | -           | COTS        |          | 0.22   | 3   |
| 12  | Lindaper_HB10-1                       | Hollo-Bolt M10x49                          | -           | COTS        |          | 0.11   | 21  |
| 13  | Loctite 243                           | Threadlocking adhesive medium strength 8ml | -           | COTS        |          | 0.00   | 1   |
| 14  | DIN 976-1 M12 8.8 HDG L=200           | Metric thread stud bolt                    | HDG-8.8     | COTS        |          | 0.18   | 8   |
| 15  | ISO-15977-4x12 (6,5-8,5)              | Standard rivet, dome head                  | Al/St       | COTS        |          | 0.00   | 4   |
| 16  | ISO4032 (DIN934) M8                   | Hex nut                                    | HDG-8       | COTS        |          | 0.01   | 6   |
| 17  | DIN7349 M10                           | Thick washer                               | HDG-HV200   | COTS        |          | 0.01   | 139 |
| 18  | ISO4032 (DIN934) M12                  | Hex nut                                    | HDG-8       | COTS        |          | 0.02   | 8   |
| 19  | ISO7089 (DIN125) M8                   | Plain Washer                               | HDG-HV200   | COTS        |          | 0.00   | 6   |
| 20  | ISO7089 (DIN125) M10                  | Plain Washer                               | HDG-HV200   | COTS        |          | 0.00   | 4   |
| 21  | ISO7089 (DIN125) M12                  | Plain Washer                               | HDG-HV200   | COTS        |          | 0.01   | 8   |
| 22  | ISO10642 (DIN7991) M8x30              | CSK socket screw                           | FlakeZn-8.8 | COTS        |          | 0.01   | 12  |
| 23  | SB EN 15048-1 ISO4017 (DIN933) M10x30 | SB Hex bolt                                | HDG-8.8     | COTS        |          | 0.03   | 70  |
| 24  | SB EN 15048-1 ISO4032 (DIN934) M10    | SB Hex nut                                 | HDG-8       | COTS        |          | 0.01   | 73  |

**WEMPS ENGINEERING SERVICES**

MATERIAL: 1045.254 Kg  
DEBURR AND BREAK SHARP EDGES DO NOT SCALE DRAWING  
REVISION: 30.06.2026  
DATE: 30.06.2026

SURFACE PROTECTION: MACHINING  
THERMAL CUTTING: ISO 9013 221  
WELDING: ISO 13920 BF  
SCALE: 1:40  
FORMAT: A2

NAME: SEKO  
SIGNATURE: D. Dislers  
PART NO.: 105-60300-00  
DESCRIPTION: Mesh facade assembly  
SHEET 1/1